

# 30870 Russell Ranch Road

Westlake Village CA, 91362



30870 Russell Ranch Road  
Westlake Village | CA 91362

# Property Details

RSF  
17,738 RSF

Lease Expiration  
6/30/2030

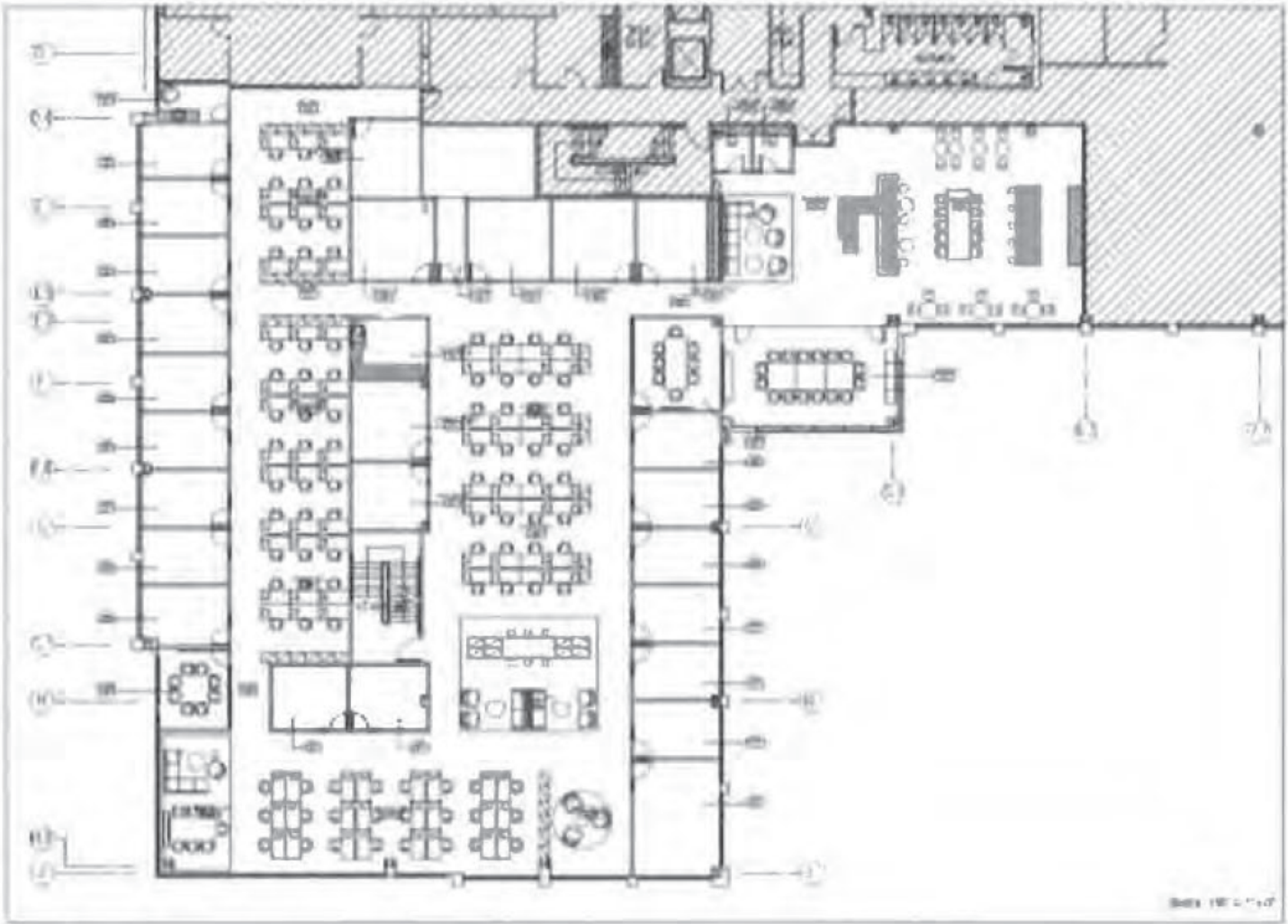
Ask Rate  
\$1.75 FSG



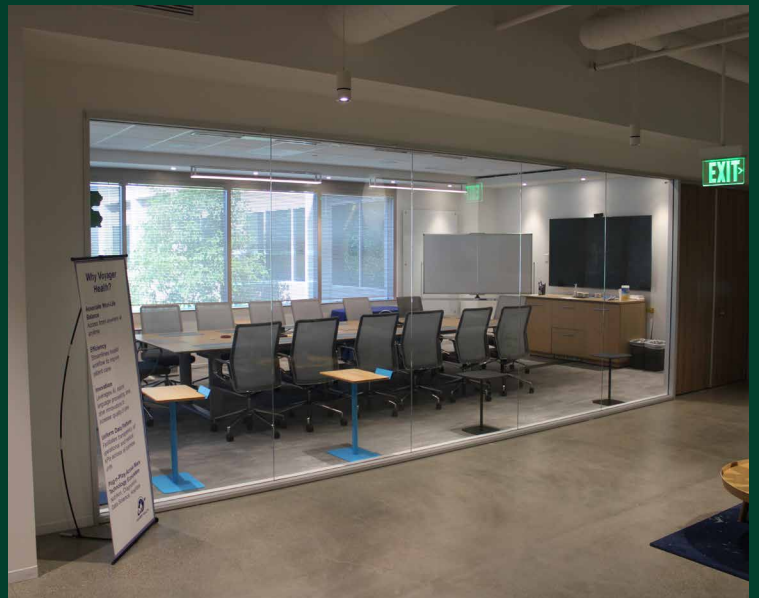
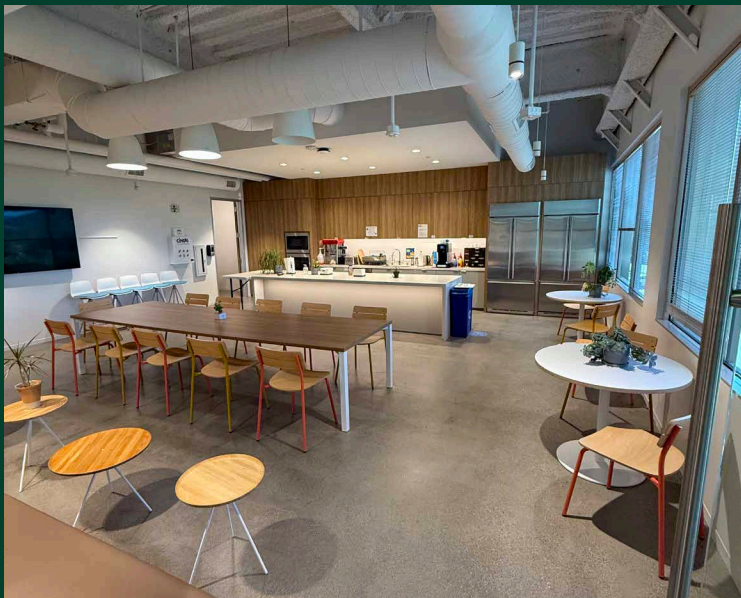
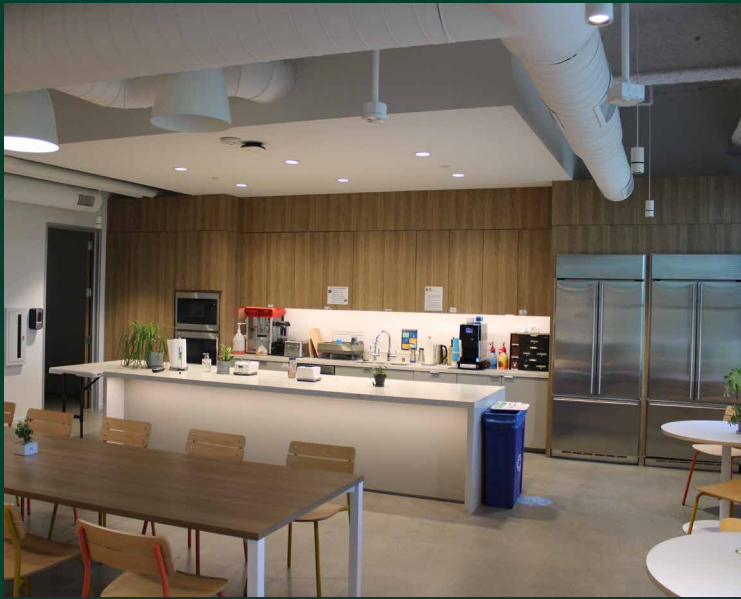
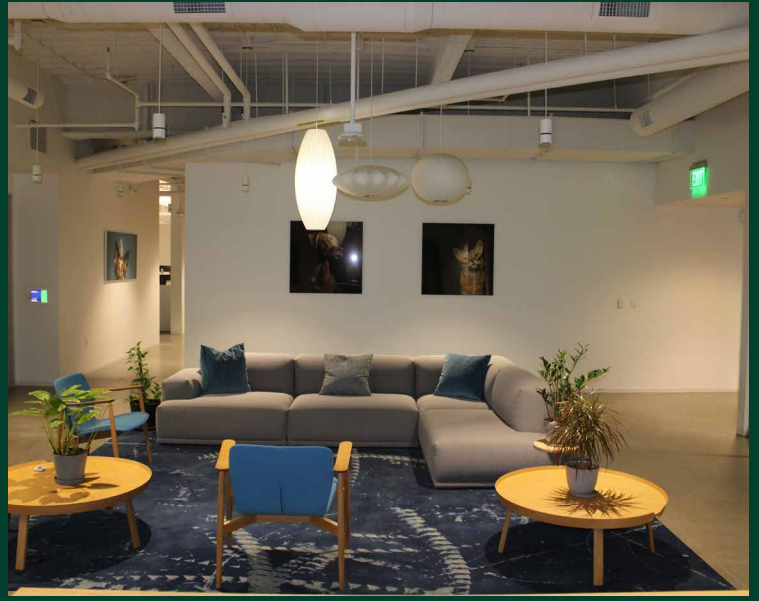
## Suite Highlights

- + Reception Area
- + Kitchen
- + 3 Conference Rooms
- + Ample Bullpen
- + More than 15 Windowed Offices
- + Nursing Room/Wellness Room
- + Multiple Storage Areas
- + Exposed Ceilings in Multiple Areas
- + Furniture can be made available

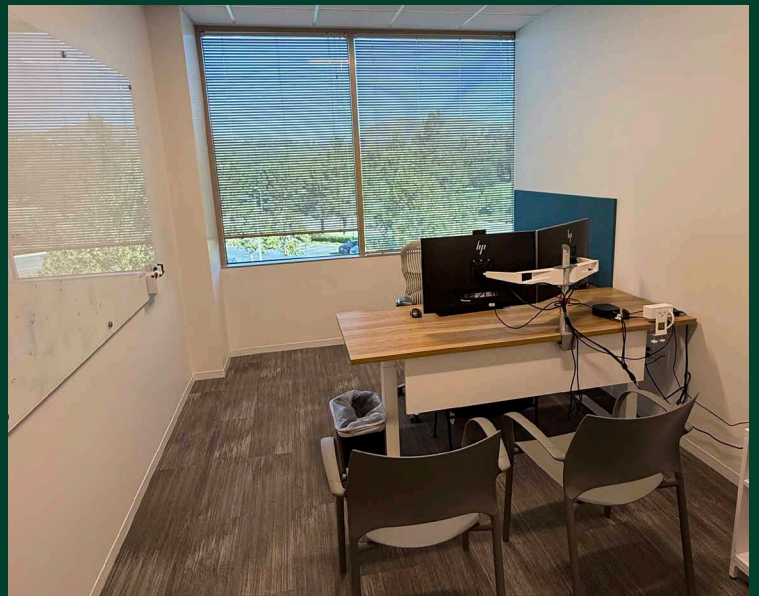
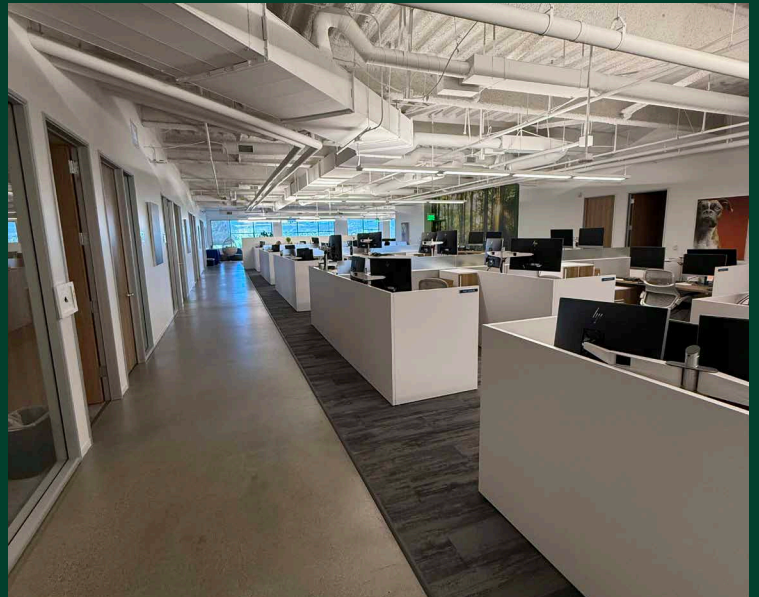
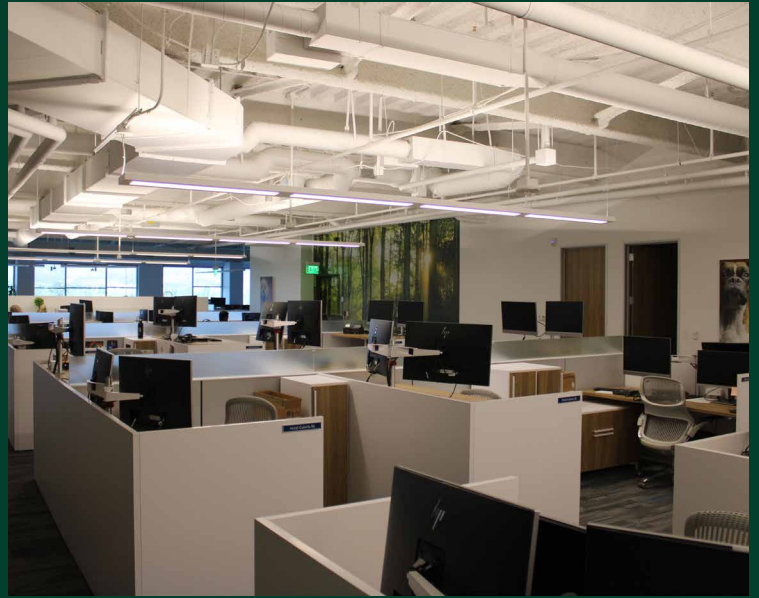
# Floor Plan



30870 Russell Ranch Road  
Westlake Village | CA 91362



For Sublease





## Contact Us

**Dalton W. Saberhagen**

Vice President

+1 818 268 0732

[dalton.saberhagen@cbre.com](mailto:dalton.saberhagen@cbre.com)

Lic. 01971713

© 2025 CBRE, Inc. All rights reserved. This information has been obtained from sources believed reliable, but has not been verified for accuracy or completeness. You should conduct a careful, independent investigation of the property and verify all information. Any reliance on this information is solely at your own risk. CBRE and the CBRE logo are service marks of CBRE, Inc. All other marks displayed on this document are the property of their respective owners, and the use of such logos does not imply any affiliation with or endorsement of CBRE. Photos herein are the property of their respective owners. Use of these images without the express written consent of the owner is prohibited.