

# CBRE PHILADELPHIA INVESTMENT PROPERTIES | MULTIFAMILY AVAILABLE PROPERTIES



2023

CBRE

# CBRE PHILADELPHIA INVESTMENT PROPERTIES | MULTIFAMILY AVAILABLE PROPERTIES



**TOWERS OF WINDSOR PARK**  
525 UNITS  
CHERRY HILL, NJ

**VISIT WEBSITE**



**GERMANTOWN SQUARE**  
33 UNITS  
PHILADELPHIA, PA

**VISIT WEBSITE**



**PARK AVENUE APARTMENTS**  
13 UNIT  
BRISTOL, PA

**VISIT WEBSITE**



## RE-DEVELOPMENT SITE



**215 QUARRY ST**  
28 UNIT  
WHITEHALL, PA

**VISIT WEBSITE**



## DEVELOPMENT SITE



**722 SANDY STREET**  
76 UNITS  
NORRISTOWN, PA  
**BID PROCESS**

**VISIT WEBSITE**



**THE VIEW AT OLD CITY**  
216 UNIT  
PHILADELPHIA, PA  
**BID PROCESS**

**VISIT WEBSITE**



## DEVELOPMENT SITE



**COLLEGE AVE TOWNHOMES**  
53 TOWNHOMES  
LANCASTER, PA  
**UNDER PRICE AGREEMENT**

**MORE INFO**



## DEVELOPMENT SITE



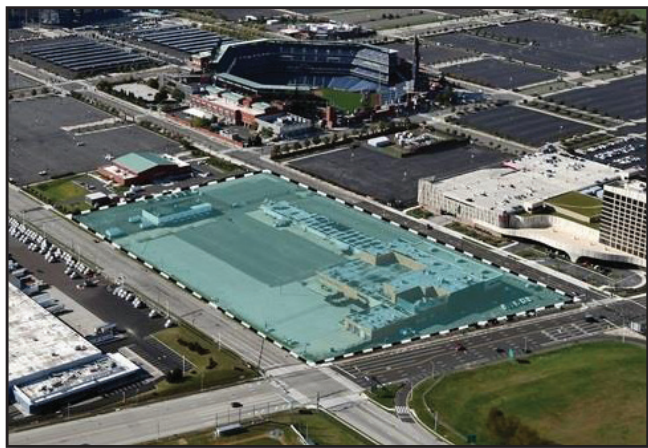
**ODESSA APARTMENTS**  
2 ACRES, 225 UNITS  
PHOENIXVILLE, PA  
**UNDER PRICE AGREEMENT**

**MORE INFO**



# CBRE PHILADELPHIA INVESTMENT PROPERTIES | MULTIFAMILY AVAILABLE PROPERTIES

## RE-DEVELOPMENT SITE



### STADIUM SQUARE

13 - ACRE SITE

PHILADELPHIA, PA

**UNDER PRICE AGREEMENT**

**MORE INFO**



## DEVELOPMENT SITE



### 530 MILFORD STREET

84 UNIT

NORTHAMPTON TOWNSHIP, PA

**UNDER PRICE AGREEMENT**

**MORE INFO**



## DEVELOPMENT SITE



### 6237-45 GERMANTOWN AVE

47 UNIT

PHILADELPHIA, PA

**UNDER CONTRACT**

**MORE INFO**



### 4200-4216 WOODLAND AVE

21 UNITS

DREXEL HILL, PA

**UNDER CONTRACT**

**MORE INFO**



## CONTACT US

### **SPENCER YABLON**

Senior vice president  
+ 610 251 5132  
[spencer.yablon@cbre.com](mailto:spencer.yablon@cbre.com)

### **ROBERT MILLER**

Executive vice president  
+ 610 251 5118  
[robert.f.miller@cbre.com](mailto:robert.f.miller@cbre.com)

### **JOHN MCFADDEN**

Executive vice president  
+ 610 251 5118  
[john.mcfadden@cbre.com](mailto:john.mcfadden@cbre.com)

### **SAMANTHA KUPERSMITH**

Senior associate  
+ 610 727 5948  
[samantha.kupersmith@cbre.com](mailto:samantha.kupersmith@cbre.com)

### **BRAD MEGAY**

Senior ASSOCIATE  
+ 610 386 6007  
[brad.megay@cbre.com](mailto:brad.megay@cbre.com)

### **ADRIAN SAM**

ASSOCIATE  
+1 610 727 5948  
[adrian.sam@cbre.com](mailto:adrian.sam@cbre.com)

555 E. LANCASTER AVENUE  
SUITE 120  
RADNOR, PA 19087

TWO LIBERTY PLACE  
50 S. 16TH STREET, SUITE 3000  
PHILADELPHIA, PA 19102

[WWW.CBRE.US/PHILADELPHIA](http://WWW.CBRE.US/PHILADELPHIA)

CAPITAL MARKETS | INVESTMENT PROPERTIES

**CBRE**